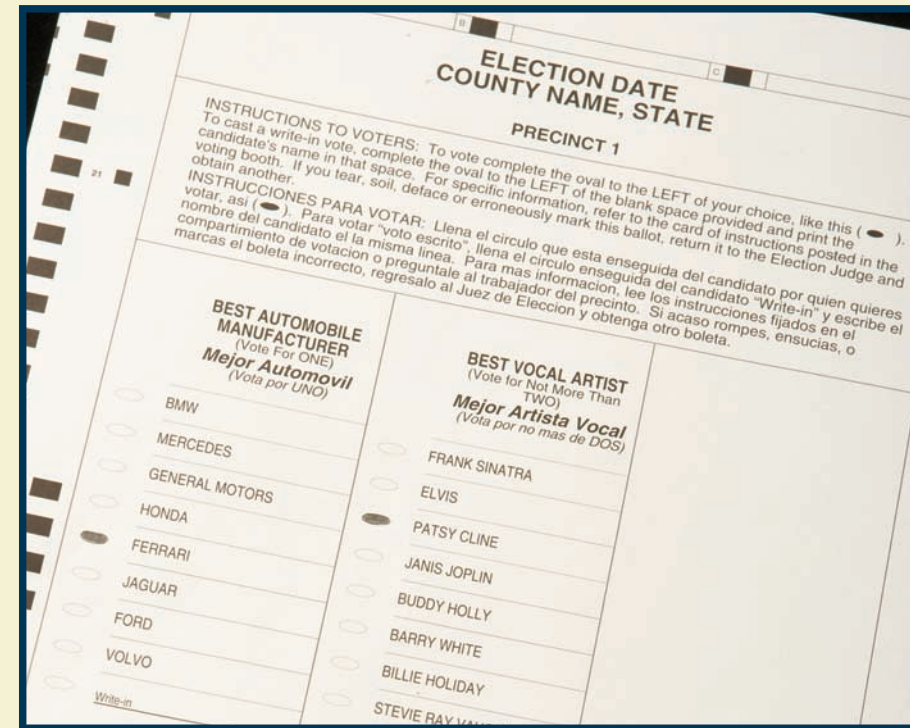


1,2,3, **VOTE!**

Voting With a Paper Ballot

1 RECEIVE BALLOT

Receive ballot from poll worker, who will direct you to a voting booth for privacy.

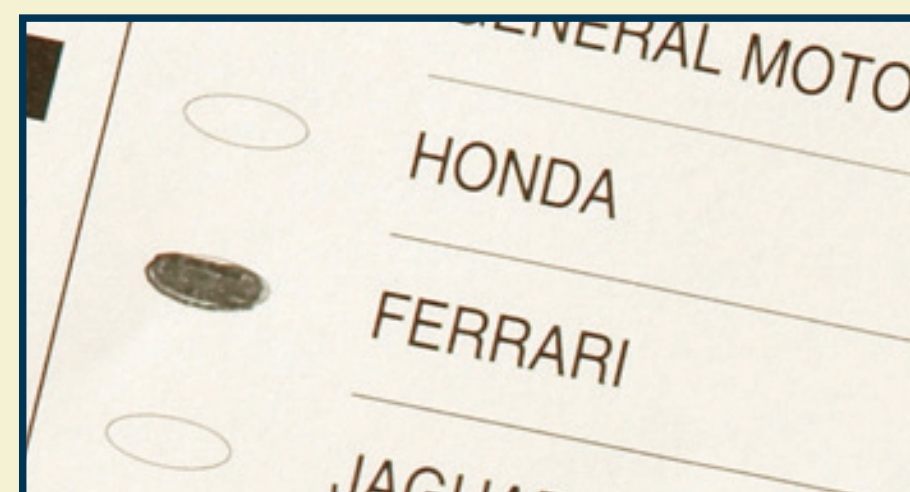


2 MARK BALLOT

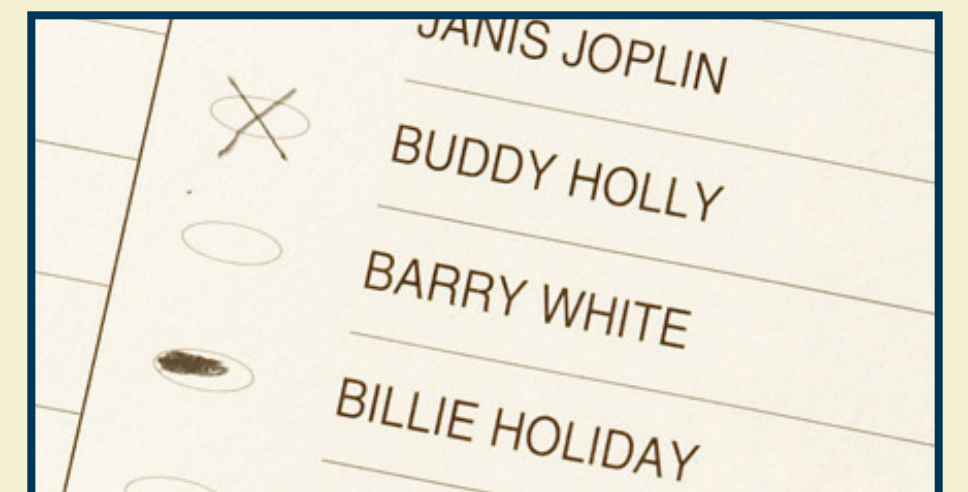
Make your selections for a particular candidate or issue by completely darkening the oval next to your choice.

- **WRITE-IN CANDIDATES**

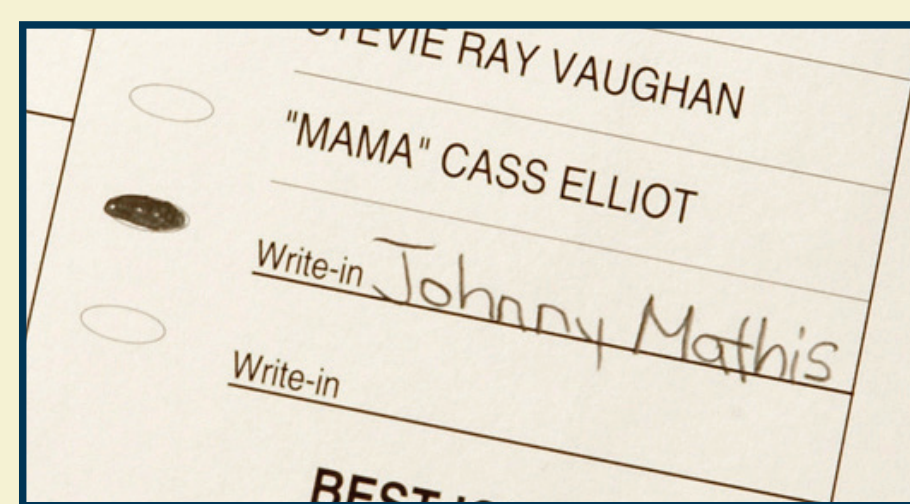
For write-in candidates, fill in the oval next to the words **"WRITE IN"** and write the candidate's name on the line.



Correctly marked ballot selection



Incorrectly marked ballot selections



Correctly marked write-in candidate selection

3 REVIEW AND SUBMIT BALLOT

Review your ballot to make sure you've marked your ballot correctly (see guidelines below). Then, insert your ballot into the ballot box. It will be counted at a central location.

CHECK IT TWICE!

Double-check your ballot very carefully before you place it in the ballot box to avoid making mistakes that can prevent your ballot from being counted.

Make sure you:

- ✓ Have correctly marked the candidate or issue you intended.
- ✓ Have not cast votes for more than the allowable number of candidates in a contest (called an **OVERVOTE**). Your vote in these races or issues cannot be counted.
- ✓ Have not accidentally left any races blank (called an **UNDERVOTE**).

You can request a new ballot from an election official. You will be asked to sign a Spoiled Ballot Affidavit, and you may "spoil" up to two ballots and receive another (three ballots total).

Once you drop your ballot in the ballot box, no changes can be made.

FOR MORE INFORMATION

Arkansas Secretary of State
Elections Division
State Capitol, Room 026
Little Rock, AR 72201

1-800-482-1127

www.VoteNaturally.org

